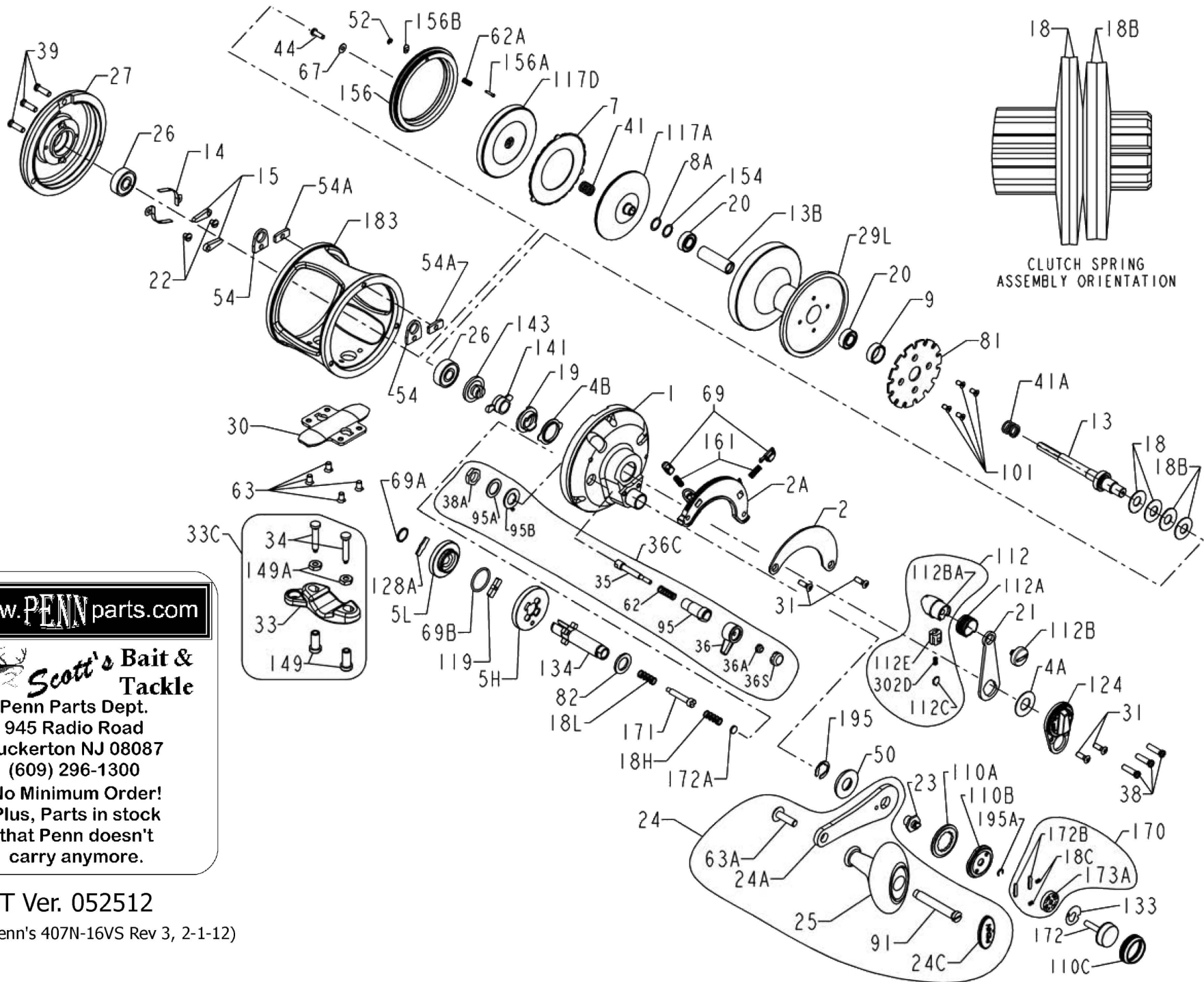




# PARTS LIST FOR MODEL 16VS FOR SERIAL Nos. AFTER J100001

REEL PART NO. 1151027



[www.PENNparts.com](http://www.PENNparts.com)

**Scott's Bait & Tackle**  
 Penn Parts Dept.  
 945 Radio Road  
 Tuckerton NJ 08087  
 (609) 296-1300  
 No Minimum Order!  
 Plus, Parts in stock  
 that Penn doesn't  
 carry anymore.

SBT Ver. 052512

(based on Penn's 407N-16VS Rev 3, 2-1-12)

## Penn Reel Parts list for:

## Model: 16VS (AFTER J100001)

KEY PART			KEY PART		
NO	NO.	DESCRIPTION	NO	NO.	DESCRIPTION
1	1N-16VS	R.S. PLATE ASSEMBLY	62	62-50	CLICK SPRING
2	2-16VS	QUADRANT RING	62A	14-99	DOG SPRING
2A	2A-16VS	QUADRANT RATCHET PLATE	63	31-16VS	STAND SCREW (4 REQ.)
4	4-12LT	THRUST WASHE R	63A	63A-16VS	HANDLE KNOB SHAFT SCREW
4A	4-30VS	CAM THRUST WASHE R	67	67-16VS	PINION GEAR WASHER
5H	5-16VSHS	MAIN GEAR HIGH SPEED	69	69-12VS	LOCATING PIN (2 REQ.)
5L	5-16VSL	MAIN GEAR LOW SPEED	69A	195-24KG	RETAINING RING, MAIN GEAR LS
7	7-16VS	METAL DRAG WASHER	69B	69C-245	RETAINING RING, MAIN GEAR HS
9	9-16VS	SPACING SLEEVE	69C	69-16VS	RETAINING RING F/CLICK BUTTON
13	13-16VS	PINION GEAR	81	81-16VS	RATCHET (EARLY RUNS HAD 81-16S)
13B	13B-16VS	SPOOL SLEEVE	82	82-24KG	SHIM
14	14-16S	DOG SPRING (2 REQ.)	91	91S-16VS	HANDLE RIVET
15	15-50	DOG (2 REQ.)	95	95-70	CLICK TONGUE BUSHING
18	18-12T	DISC CLUTCH SPRING (2 REQ.)	95A	95A-20	SERRATE CLICK WASHER
18A	18-525	CLICK SPRING	95B	95A-50	TAB CLICK WASHER
18B	18-16VS	DISC CLUTCH SPRING (2 REQ.)	101	101-30	DRIVE PLATE SCREW (4 REQ.)
18C	18C-15KG	PRESET KNOB SPRING (2 REQUIRED)	110A	110A-30VS	RING
18H	18H-30VS	SHIFT SPRING (HEAVY)	110B	110B-30VS	SHIFT BASE
18L	18L-30VS	SHIFT SPRING (LIGHT)	110C	110C-30VS	SHIFT BUTTON RETAINER
19	19-16VS	ECCENTRIC CAM	112	112-30VS	ECCENTRIC LEVER KNOB ASSEMBLY
20	20-722	SPOOL BALL BEARING (2 REQ)	112A	112A-30VS	KNOB SLEEVE
21	21-16VS	ECCENTRIC LEVER	112B	112B-70	ECCENTRIC KNOB SCREW
22	22-109	DOG SPRING SCREW (2 REQ.)	112BA	112B-30VS	DRAG KNOB
23	23-30VS	HANDLE/SHIFT BUTTON SCREW	112C	112C-30VS	DRAG CLICK PLATE
24	24-16VS	HANDLE COMPELTE	112E	112E-30VS	CLICK PLATE HOUSING
24A	24A-16VS-1	HANDLE BLANK ONLY	117A	117AN-16VS	INNER DRIVE PLATE ASSEMBLY
24C	24C-113HN	HANDLE KNOB CAP	117D	117DN-16VS	OUTER DRIVE PLATE ASSEMBLY
25	25S-113HN	HANDLE KNOB	119	119-24KG	SHIFT PLATE
26	26N-40	BALL BEARING (2 REQ.)	124	124L-16VS	BRIDGE COVER ASSEMBLY
27	27-16VS	L.S. PLATE	128A	128A-24KG	CAM HOUSING
29	29L-16VS	SPOOL	133	133-30VS	RETAINING PLATE
30	30-16VS	STAND	134	134-16VS	GEAR STUD
31	31T-70	SHORT SCREW (4 REQ.)	141	141-30VS	CAM FOLLOWER
33	33-16VS	ROD CLAMP, IRON ALLOY	143	143-16VS	PRESET SCREW
33C	33C-16VS	ROD CLAMP KIT	149	149-45	ROD CLAMP NUT (2 REQ.)
34	34-16VS	CLAMP SCREW (2 REQ.)	149A	149-200	ROD CLAMP LONG NUT (2 REQ.)
34C	34C-16VS	ROD CLAMP SCREW W/ NUT	154	154-16VS	SHIM (2 ONLY IF NEEDED - OPTIONAL)
35	35N-16VS	CLICK TONGUE	156	156-16VS	DRAG COVER
36	36N-50	CLICK LEVER	156A	156A-16VS	PIN
36A	36-700	CLICK LEVER NUT	156B	156B-16VS	PLATE
36C	36C-16VS	CLICK ASSEMBLY KIT	162	162-50	LOCATING PIN SPRING (2 REQ.)
36S	36S-80ST	CLICK LEVER CAP	170	170-30VS	CATCH ASSEMBLY
38	38-16VS	R.S. PLATE SCREW (3 REQ.)	171	171-15KG	SHIFT PLUNGER
38A	38-710	CLICK BUSHING NUT	172	172N-30VS	SHIFT BUTTON (METAL)
39	39-16VS	L.S. PLATE SCREW (3 REQ.)	172A	172A-15KG	SPACER
41	41-109	L.S. BEARING SPRING	173	173-16VS	RETAINING RING (EARLY RUNS ONLY)
41A	41-60	DRAG SPRING	172B	173-30VS	SHIFTER CATCH PLATE (2 REQUIRED)
44	44-710	PINION END SCREW	173A	173A-30VS	SHIFTER CATCH HOUSING
50	50-30VS	GEAR STUD SHEILD	183	183-16VS	TUBE FRAME
52	52-16VS	RETAINING RING	195	195-40	RETAINING RING, FOR SHIFT ASSEMBL
54	54-16S	HARNESS LUG (2 REQ.)	195A	67-30VS	RETAINING RING, FOR SHIFT BUTTON
54A	54A-16VS	HARNESS LUG PLUG (2 REQ.)	302D	302D-525MAGDRAG	CLICK PLATE SPRING

NOTE: Many of www.pennparts.com schematics include changes that were either made by Penn, or errors found and corrected by our parts dept.

**SBT VER. 052512**

USES WRENCHES: 168-60, 168-30VS, 168A-70

BAG: 111-50