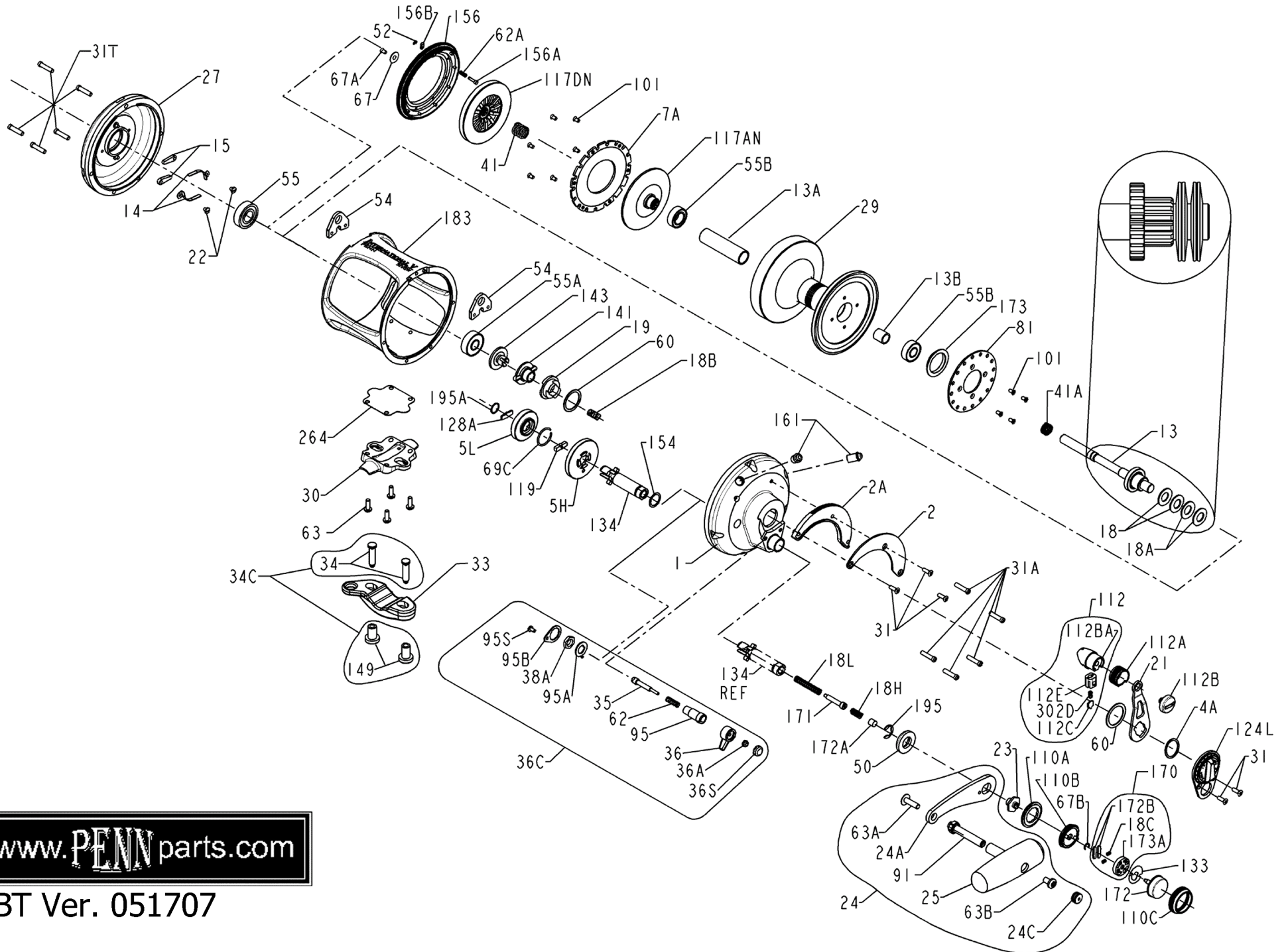




PARTS LIST FOR MODEL 50VSW For Serial No's C060001 and AFTER



www.PENNparts.com

SBT Ver. 051707

Penn Reel Parts list for Model: 50VSW For Serial No's C060001 and AFTER

KEY PART			KEY PART		
NO	NO.	DESCRIPTION	NO	NO.	DESCRIPTION
1	1N-50VS	RIGHT SIDE PLATE ASSEMBLY	34	34-70	CLAMP SCREW (2 REQ.)
2	2-50VS	QUADRANT RING	34C	34C-70	ROD CLAMP SCREW W/NUT
2A	2A-50VS	QUADRANT RATCHET/SPACER	35	35-70	CLICK TONGUE
4A	4-12LT	TEFLON THRUST WASHER	36	36N-50	CLICK BUTTON
5H	5N-50VS-HS	MAIN GEAR HIGH-SPEED	36C	36C-50VSW	CLICKER ASSEMBLY
5L	5N-50VS-LS	MAIN GEAR LOW-SPEED	36A	36-700	CLICK BUTTON NUT
7A	7A-50VS	METAL DRAG WASHER	36S	36S-80ST	CLICK BUTTON CAP
13	13-50VSW	PINION GEAR	41	41-50	BEARING SPRING
13A	13B-50VSW	SPOOL SLEEVE	41A	41-70	DRAG SPRING
13B	13B-70	PINION GEAR SLEEVE	50	50-50VS	GEAR STUD SHIELD
14	14-50	DOG SPRING (2 REQ.)	52	52-910	RETAINING RING
15	15-50	DOG (2 REQ.)	54	54-50T	HARNES LUG (2 REQ.)
18	18-50TW	DISC CLUTCH SPRING (2 REQ.)	55	55-80	BALL BEARING
18A	18-50W	DISC CLUTCH SPRING (2 REQ.)	55A	55-50	BALL BEARING
18B	18-349	SPRING	55B	55-80ST	BALL BEARING (2 REQ.)
18C	18C-15KG	SHIFT BUTTON SPRING (2 REQ.)	60	60-50	DRAG THRUST WASHER (OLD #4-70)
18H	18H-30VS	SHIFT SPRING (HEAVY)	62	62-50	CLICK SPRING
18L	18L-30VS	SHIFT SPRING (LIGHT)	62A	62-545	DRAG COVER LOCK SPRING
19	19-50VS	ECCENTRIC CAM	63	63-30T	STAND SCREWS (4 REQ.)
21	21-50VS	ECCENTRIC LEVER	63A	63A-50	HANDLE RIVET SCREW
22	22-109	DOG SPRING SCREW	63B	63-50	HANDLE KNOB SCREW
23	23-30VS	HANDLE SCREW (2 REQ.)	67B	67-30VS	SHIFTER RETAINING RING
24	24-30VS	HANDLE COMPLETE	69C	69C-245	H/L GEAR RETAINING RING (2 REQ.)
24A	24-30VS-1	HANDLE BLANK ONLY (NO KNOB)	81	81-50	RATCHET DISC PLATE
24C	24C-50M	HANDLE KNOB CAP	91	91N-50	HANDLE RIVET
25	25-50M	HANDLE KNOB	67	67-70	PINION GEAR WASHER
27	27N-50VS	L.S. PLATE ASSEMBLY	67A	67A-70	PINION RETAINING SCREW
29L	29N-50VSW	SPOOL	95	95-70	CLICK TONGUE BUSHING
30	30-50VS	STAND	95A	95A-50	CLICK BUSHING WASHER
31	31T-70	SHORT SCREW (5 REQ.)	95B	95B-70	CLICK RETAINING PLATE
31T	31-80VS	SIDE PLATE SCREW (10 REQ.)	95S	23-750	CLICK RETAINING PLATE SCREW
33	33-70	ROD CLAMP	101	101-30	RATCHET PLATE SCREW (10 REQ.)
33C	33C-70VS	ROD CLAMP KIT W/ALL STUDS/NUTS			

KEY PART NO NO.	DESCRIPTION	KEY NO	PART NO.	DESCRIPTION
110A 110A-30VS	HANDLE LOCKING PLATE	149	149-70	ROD CLAMP NUT (2 REQ.)
110B 110B-30VS	SHIFT HOUSING	154	154-80	GEAR STUD SHIM
110C 110C-30VS	SHIFTER BUTTON RETAINING RING	156	156N-50VS	DRAG COVER
112 112-30VS	DRAG LEVER KNOB ASSEMBLY	156A	156A-30VS	LOCK PIN
112A 112A-30VS	KNOB SLEEVE	156B	156B-30VS	LOCK PLATE
112B 112B-70	DRAG KNOB SCREW	161	161C-30VSW	DRAG LOCATING PIN ASSEMBLY (2 REQ.)
112BA112B-30VS	DRAG LEVER KNOB	162	162-50	LOCATING PIN SPRING (2 REQ.)
112C 112C-30VS	DRAG CLICK PLATE	170	170-30VS	SHIFTER CATCH HOLDER ASSEMBLY
112E 112E-30VS	DRAG LEVER CLICK PLATE HOUSING	171	171-30VS	SHIFT PLUNGER (SCREW)
117A 117AN-70	RETAINING PLATE W/DRAG WASHER	172	172-30VS	SHIFT BUTTON (LOW)
117D 117DN-70	DRIVE PLATE W/ DRAG WASHER	172A	172A-50VS	SHIFTER SPACER
119 119-24KG	COUPLING PLATE	172B	173-30VS	SHIFTER CATCH PLATE (2 REQ.)
124L 124L-50VS	BRIDGE COVER ASSEMBLY	173	173-50VS	SPOOL BUSHING
*128 128-50S	LOW GEAR PINS (6 REQ.)	173A	173A-30VS	SHIFTER CATCH HOLDER
128A 128A-24KG	LOW GEAR DRIVE PLATE	183	183N-50VSW	TUBE FRAME W/ DOWL PINS
133 133-30VS	SHIFTER RETAINING PLATE	195	195-40	RETAINING RING
134 134N-50VS	GEAR STUD	195A	195-24KG	SPIRAL RETAINING RING
141 141-50VS	CAM FOLLOWER	264	264-30VS	STAND GASKET
143 143-50VS	PRESET SCREW	302D	302D-525MAG	DRAG CLICK PLATE SPRING

**NOT SHOWN*

NOTE: Many of www.pennparts.com schematics include changes that were either made by Penn, or errors found and corrected by our parts dept.
SBT Ver. 051707 (based on Penn's Rev. #2 - 2-27-07)

*154 154-50 Shim, Spool Shaft

VERY IMPORTANT PLEASE READ!!!!!!!

Penn used serial numbers to distinguish the two versions but we have since found out that their numbers were not accurate.

So use the method below to identify your reel.

TAKE A LOOK AT YOUR HANDLE:

This is the most simple way to tell which version you have. The shaft that the handle sits on is a different diameter on the two versions.

So - Take off the handle and look at the hole on the handle blade. Measure the inside diameter of the hole using the flat edges.

NEWER Version: Inside width of hole is 7/16" slightly larger

OLDER Version: Inside width of hole is 3/8"