

* parts not to scale, some redrawn



PARTS LIST FOR MODEL 50VWS

Silver REEL NO. 1151047

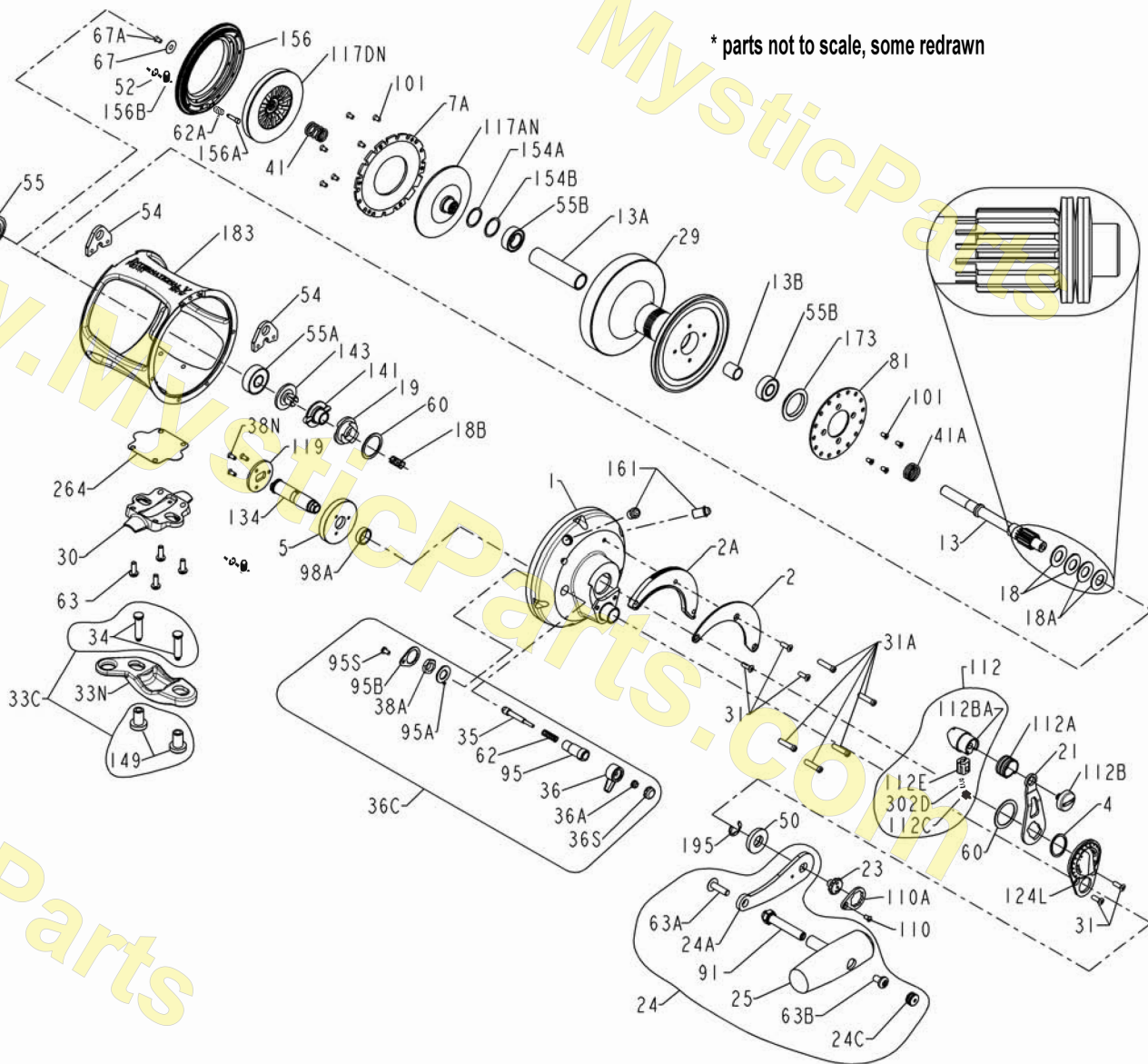


965 Radio Raod
Little Egg Harbor, NJ 08087
+1 (609) 296-1300
www.mysticparts.com
customerservice@mysticparts.com

MRP Ver 062022

(based on Penn's Rev 6 4-20-15)

50VWS_after.pdf



Penn Reel Parts list for Model: 50VW (SILVER) (AFTER design changes) International V Single Speed Reel

KEY NO	PENN PART #	PUREFISHING PART #	DESCRIPTION	KEY NO	PENN PART #	PUREFISHING PART #	DESCRIPTION
1	1N-50VSSLV	1389477	HANDLE SIDE PLATE ASSEMBLY (SILVER)	60	60-50	1183983	DRAG THRUST WASHER (OLD #4-70)
2	2-50VS	1180598	QUADRANT RING	62	62-50	1184022	CLICK SPRING
2A	2A-50VS	1190902	QUADRANT RATCHET/SPACER	62A	62-545	1184029	DRAG COVER LOCK SPRING
4A	4-12LT	1180748	TEFLON THRUST WASHER	63	63-30T	1184045	STAND SCREWS (4 REQ.)
5	5-50VW	1223793	MAIN GEAR	63A	63A-50	1184056	HANDLE RIVET SCREW
7A	7A-50VS	1181035	METAL DRAG WASHER	63B	63-50	1184046	HANDLE KNOB SCREW
13	13-50VW	1191102	PINION GEAR	67	67-70	1184106	PINION GEAR WASHER
13A	13B-50VSW	1181370	SPOOL SLEEVE	67A	67A-70	1184111	PINION RETAINING SCREW
13B	13B-70	1181371	PINION GEAR SLEEVE	81	81-50	1184204	RATCHET DISC PLATE
14	14-50	1181391	DOG SPRING (2 REQ.)	91	91N-50	1184304	HANDLE RIVET
15	15-50	1181425	DOG (2 REQ.)	95	95-70	1184307	CLICK TONGUE BUSHING
18	18-50TW	1181613	DISC CLUTCH SPRING (2 REQ.)	95A	95A-50	1184311	CLICK BUSHING WASHER
18A	18-50W	1181614	DISC CLUTCH SPRING (2 REQ.)	95B	95B-70	1184312	CLICK RETAINING PLATE
18B	18-349	1181622	SPRING	95S	23-750	1181953	CLICK RETAINING PLATE SCREW
19	19-50VS	1181646	ECCENTRIC CAM	98A	98A-50VW	1192707	GEAR STUD SPACER
21	21-50VS	1181834	ECCENTRIC LEVER	101	101-30	1184403	RATCHET PLATE SCREW (10 REQ.)
22	22-109	1181912	DOG SPRING SCREW	110	110-50	1184436	HANDLE LOCKING SCREW
23	23-114	1181945	HANDLE SCREW	110A	110A-50	1184441	HANDLE LOCKING PLATE
24	24N-50T	1181975	HANDLE COMPLETE	112	112-30VSSLV	1390201	DRAG LEVER KNOB ASSEMBLY (SILVER)
24A	24-50T-1	1181976	HANDLE METAL BLANK ONLY (NO KNOB)	112A	112A-30VS	1184460	KNOB SLEEVE
24C	24C-50M	1191334	HANDLE KNOB CAP	112B	112B-70SLV	1389498	DRAG KNOB SCREW (SILVER)
25	25-50M	1191345	HANDLE KNOB	112BA	112B-30VSSLV	1389497	DRAG LEVER KNOB (SILVER)
27	27N-50VWVSLV	1390196	NON-HANDLE SIDE PLATE ASSEMBLY (SILVER)	112C	112C-30VS	1192712	DRAG CLICK PLATE
29L	29N-50VWVSLV	1389494	SPOOL (SILVER)	112E	112E-30VS	1192713	DRAG LEVER CLICK PLATE HOUSING
30	See design changes below						
31	31T-70	1182700	SHORT SCREW (5 REQ.)	117A	117AN-70	1184496	RETAINING PLATE W/DRAG WASHER
31T	31-80VS	1191564	SIDE PLATE SCREW (10 REQ.)	117D	117DN-70VS	1184503	DRIVE PLATE W/ DRAG WASHER
33	33N-70	1191619	ROD CLAMP	119	119-50	1192268	MAIN GEAR COUPLING PLATE
33C	See design changes below						
34	See design changes below						
34C	See design changes below						
35	35-70VS	1191667	CLICK TONGUE	124A	124L-50VS	1184549	BRIDGE COVER ASSEMBLY
36	36N-50	1183047	CLICK BUTTON	134	134-50VW	1192310	GEAR STUD
36C	36C-50VSW	1183039	CLICKER ASSEMBLY	141	141-50VS	1184655	CAM FOLLOWER
36A	36-700	1183014	CLICK BUTTON NUT	143	143-50VS	1184673	PRESET SCREW
36S	36S-80ST	1183051	CLICK BUTTON CAP	149	149-70	1184703	ROD CLAMP NUT (2 REQ.)
38A	38-710	1183157	CLICK BUSHING NUT	154	154-80	1184719	GEAR STUD SHIM
38N	38N-7	1183171	COUPLING PLATE SCREW (3 REQ.)	156	156N-50VS	1184739	DRAG COVER
41	41-50	1183325	BEARING SPRING	156A	156A-30VS	1184752	LOCK PIN
41A	41-70	1183328	DRAG SPRING	156B	156B-30VS	1184756	LOCK PLATE
50	50-30VW	1191965	GEAR STUD SHIELD	161	161C-30VSW	1192369	DRAG LOCATING PIN ASSEMBLY (2 REQ.)
52	52-910	1183840	RETAINING RING	162	162-50	1184795	LOCATING PIN SPRING (2 REQ.)
54	54-50T	1183854	HARNES LUG (2 REQ.)	173	173-50VS	1184838	SPOOL BUSHING
55	55-80	1183878	BALL BEARING	183	See design changes below		
55A	55-50	1183876	BALL BEARING	195	195-40	1184955	RETAINING RING
55B	55-80ST	1183879	BALL BEARING (2 REQ.)	264	See design changes below		
				302D	302D-52SMAG	1185255	DRAG CLICK PLATE SPRING

MYSTIC REEL PARTS REVISION!

NOTE: Many of www.mysticparts.com schematics include changes that were either made by Penn, or errors found and corrected by our parts dept.
MRP Ver 062022 (based on Penn's Rev 0 2006)

DESIGN CHANGES AND CORRECTIONS (REV 0)

THIS IS NEWER: Stand / Gasket / Frame / Studs / all changed!

KEY NO	PENN PART	PUREFISHING PART #	DESCRIPTION
30	30-50VS	1191552	STAND (older version is NOT available)
264	264-30VS	1192542	STAND GASKET (older version is NOT available)

You CAN convert and older reel if change all 4

THESE 2 PART NUMBERS WERE REDESIGNED in their Rev 00 thru 6 schematics
PENN DID NOT ASSIGN THE NEW PARTS NEW 7 DIGIT #S !! So be carefu

THE ORIGINAL PARTS ARE NOT AVAILABLE.

IF THE PARTS IN THE DRAWING DO NOT MATCH YOUR REEL, SEE THE 50VW_before.pdf SCHEMATIC OF the OLDER VERSION
THIS IS IMPORTANT AS THE STUD SCREWS ARE ALSO OF A DIFFERENT DESIGN

NEWER style studs that drop in from inside the frame and slide to the side in the newer stand

183	183N-50VWVSLV	1390206	TUBE FRAME (SILVER) (studs drop thru frame bottom thru stand)
33C	33C-70VS	1182770	ROD CLAMP KIT CLAMP/STUDS/NUTS/WRENCH (NEWER VERSION)
34	34-70VS	1182792	CLAMP SCREW, DROP DOWN style with pan head (2 REQUIRED)
34C	34C-70VS	1191646	ROD CLAMP SCREW W/NUT (Drop down style stud)