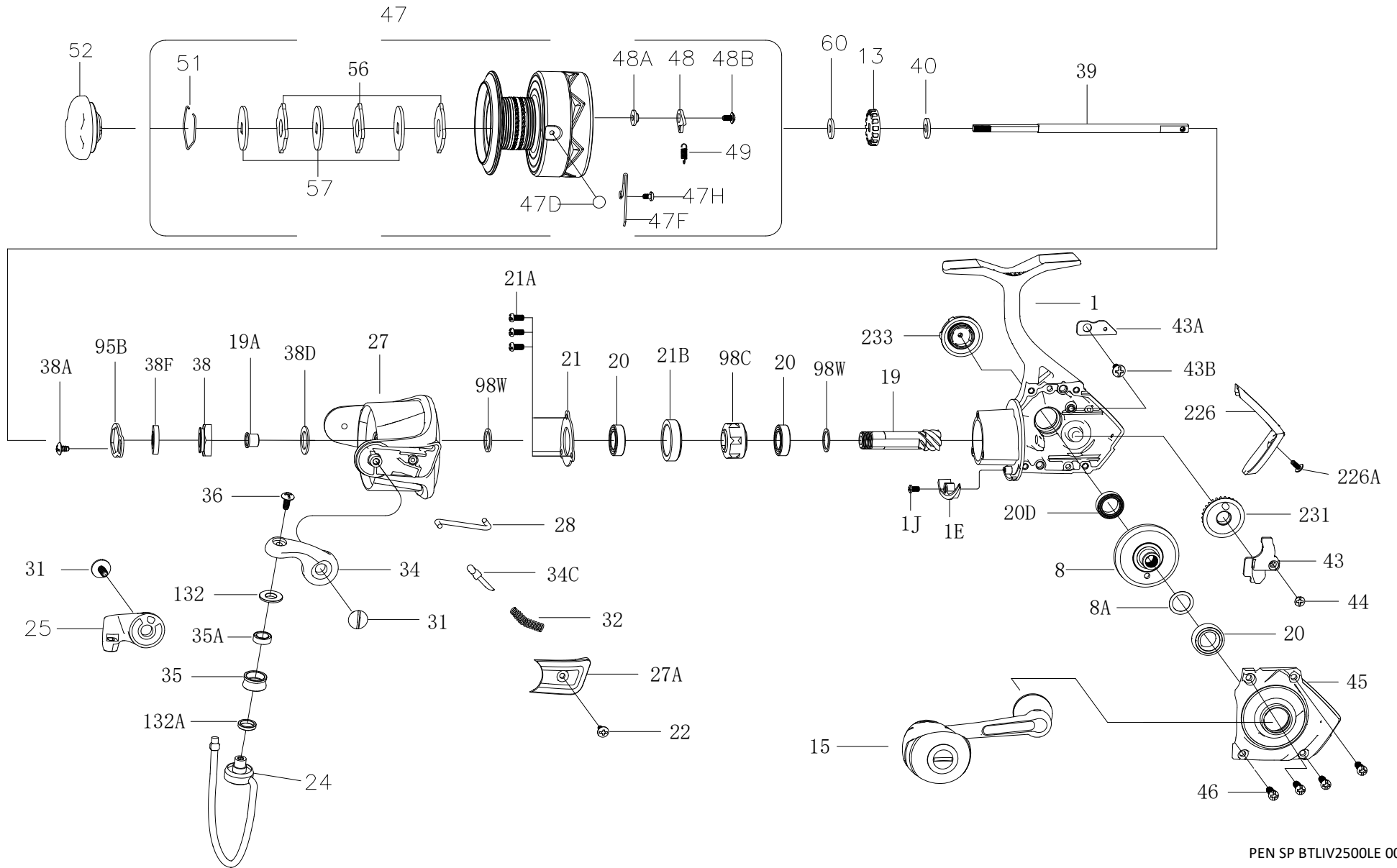




**BTLIV2500LE  
EXPLODED DRAWING**





Thank you for your recent PENN gear purchase. No matter where you fish or what you fish for, you can depend PENN to perform in any battle day in and day out. Now it's time to get your product registered and get out on the water.

<https://register.pennfishing.com>

KEY NO.	PART NO.	PENN STYLE NO.	DESCRIPTION	KEY NO.	PART NO.	PENN STYLE NO.	DESCRIPTION	KEY NO.	PART NO.	PENN STYLE NO.	DESCRIPTION
1	1632138	1-BTLIV2500LE	Housing	32	1529429	32-BTLIII1000	Bail Spring	47H	1489219	47H-SSVI3500	Line Clip Spring Screw
1E	1489251	1E-SSVI2500	Housing Slope	34	1609382	34-WRTHIII2500	Bail Arm	48	1529436	48-BTLIII1000	Click Tongue
1J	1489177	1J-SSVI3500	Housing Slope Screw	34C	1313816	34C-CFT2500	Pivot Arm	48A	1529437	48A-BTLIII1000	Click Tongue Washer
8	1529181	8-BTLIII3000	Main Gear	35	1529453	35-BTLIII2000	Line Roller	48B	1450260	48B-PAS2500	Spool Click Screw
8A	1191028	8A-3000SG	Shim	35A	1489200	35A-SSVI3500	Roller Bearing	49	1211605	49-3000SG	Click Tongue Spring
13	1529419	13-BTLIII1000	Click Ratchet	36	1251748	36-1000FRC	Bail Stud Screw	51	1313823	51-CFT2500	Drag Retaining Ring
15	1632359	15-BTLIV2500LE	Handle Assembly	38	1632351	38-BTLIV2000	Rotor Nut	52	1632354	52-BTLIV2000	Drag Knob Assembly
19	1529447	19-BTLIII2000	Pinion Gear	38A	1203995	38A-3000PUR	Rotor Locking Plate Screw	56	1313825	56-CFT2500	Drag Washer (3 req)
19A	1364314	19A-BTLII2500	Pinion Bushing	38D	1308070	38D-CFT3000	Rotor Nut Washer	57	1192041	57-2000SG	Keyed Washer (3 req)
20	1308050	20-CFT3000	Ball Bearing (3 req)	38F	1632341	38F-BTLIV1000	Main Shaft Seal Ring	60	1192059	60-2000SG	Thrust Washer
20D	1211610	20D-5000BTL	Spool Ball Bearing	39	1529464	39-BTLIII2500	Main Shaft	95B	1308081	95B-CFT3000	Rotor Locking Plate
21	1485197	21-PURIII2500	Bearing Retainer	40	1249042	42-1000BTL	Spool Shaft Washer	98C	1489279	98C-SSVI2500	Clutch/Sleeve Assembly
21A	1192644	21A-3000SG	Retainer Screw (3 req)	43	1313820	43-CFT2500	Crosswind Block	98W	1204004	98W-3000PUR	Clutch Washer
21B	1192646	21B-2000SG	Collar	43A	1489274	43A-SSVI2500	Crosswind Block Plate	98W	1192229	98W-3000SG	Clutch Washer
22	1203978	22-3000PUR	Bail Pivot Cover Screw	43B	1489213	43B-SSVI3500	Plate Screw	132	1489280	132-SSVI2500	Roller Washer
24	1529460	24-BTLIII2500	Bail Wire Assembly	44	1191843	44-3000SG	Crosswind Block Screw	132A	1489281	132A-SSVI2500	Line Roller Bushing
25	1529449	25-BTLIII2000	Bail Holder	45	1632352	45-BTLIV2000	Housing Cover	226	1632315	226-BTLIV2000	Rear Cover
27	1632135	27-BTLIV2500	Rotor	46	1192645	21A-5000SG	Cover Screw (4 req)	226A	1529386	226A-BTLIII3000	Rear Cover Screw
27A	1632136	27A-BTLIV2500	Bail Pivot Cover	47	1632137	47-BTLIV2500	Spool Assembly	231	1313828	231-CFT2500	Crosswind Gear
28	1529463	28-BTLIII2500	Trip Lever	47D	1489217	47D-SSVI3500	Line Clip	233	1529387	233-BTLIII3000	Bearing Cover Assy
31	1313814	31-CFT2500	Bail Arm Screw (2 req)	47F	1489218	47F-SSVI3500	Line Clip Spring				